

The University of Sydney

Wednesday, 10 August 2005

Dear Doctor,

I am writing to ask for your help in recruiting patients for a study of the neurophysiology and genetics of major depression. This study is a collaboration between the Brain Dynamics Centre (University of Sydney and Westmead Hospital), Flinders University in Adelaide and the Brain Resource International Database. The aim of this study is to identify predictors of treatment response in depressed patients. The uniqueness of this study relates to the bringing together of data from measures of brain activity (i.e. EEG, fMRI, neuropsychological testing) and physiological function (i.e. electrodermal, cardiac activity, genetic vulnerability).

By assisting us with our study we hope that this would be the first step in developing an ongoing collaboration between yourself and the Brain Dynamics Centre, regarding research into depression and its treatment.

Participants in this study must be either unmedicated or switching to a new medication. After identifying patients that you consider to be suffering from depression we would ask that you:

- discuss this research with your patient
- obtain their consent providing that they agree to participate
- contact research personnel after patients have agreed to participate
- conduct a once-off medical screening and physical examination
- to be classified as a researcher on the project

For your assistance you will be provided with:

- \$125 to assist in covering the costs of assessment
- An evidence based report off and on-medication
- A psychiatric evaluation of your patient
- An opportunity to participate in research outcomes

Please contact Dr Andrew Kemp (9845 8195 or kempa@psych.usyd.edu.au) if you would like to receive more information on this study or complete the faxback form overleaf.

Yours sincerely,

Michael Moore,
Chief Executive Officer
Central Sydney Division
of General Practice

Lea Williams, PhD
Director, Brain Dynamics
Centre

Philip Boyce, MD FRANZCP
Prof of Psychiatry
Dept of Psychological Medicine,
University of Sydney

STUDY OVERVIEW FOR GPs

Summary of study^{1,2}:

- To identify predictors of treatment response in depressed patients
- Integration of EEG, fMRI, neuropsychological testing, genetics
- Naturalistic study, off- and on-medication assessments

What you receive for your assistance:

- \$125 to assist in covering the costs of assessment
- Evidence based report off- and on-medication
- Psychiatric evaluation of your patient
- Opportunity to participate in research outcomes³

What we would need from you:

- Identify patients suffering from depression
- Discuss this research with your patient
- Contact research personnel after patients have agreed to participate
- Conduct a once-off medical screening and physical examination
- To be classified as researcher on the project

¹Study is funded by Johnson Pharmaceutical Research & Development and the Brain Resource Company

²Study will be carried out by the Brain Resource Company, the Brain Dynamics Centre of the University of Sydney, and Flinders University in Adelaide

³Conditional on the active and ongoing recruitment of patients

Complete this form and fax it back

Or

Phone Dr Andrew Kemp 98458195

Or

Email: kempa@psych.usyd.edu.au

Faxback 9845 8190

Please send me more information on this study:

Name: _____

Phone: _____ Fax: _____

HISTORY



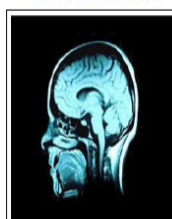
COGNITION



ELECTRICAL



STRUCTURE



GENETICS



REPORT

